



Precision Air v5 Inflator Instruction Sheet

Precision Air Inflator Includes:

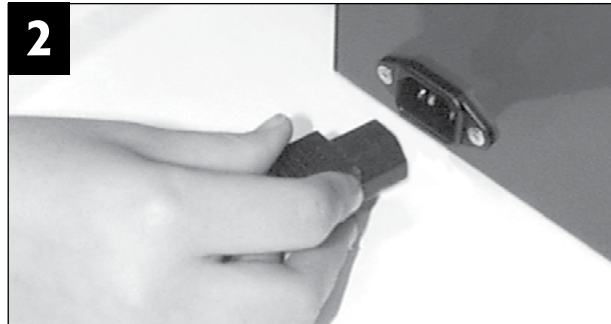
- 1 Precision Air Inflator
- 1 Power Cord
- 1 Foot Pedal
- 1 Carrying Case
- 2 Latex Outlets
- 2 Extension Tips

READ PRIOR TO USE:

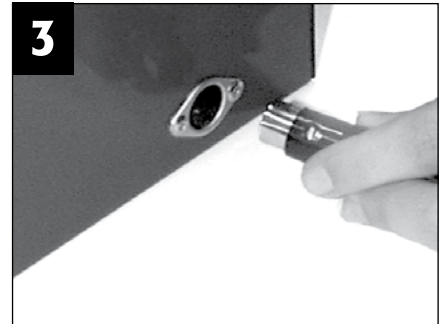
1. To prevent the risk of electrical shock, do not use the Precision Air Inflator outdoors when weather conditions are wet. Never operate unit on a wet floor or work area.
2. Prior to plugging the Precision Air Inflator into an electrical outlet, verify that the electrical rating (listed on the label on the back of the Precision Air Inflator) is suitable for the outlet. The Precision Air is not recommended for use in countries where electrical current is not consistently regulated.
3. Allow the unit to fully exhaust the air through the vent located on the bottom of the Precision Air before tapping the foot pedal to begin the next cycle.
4. Operate the Precision Air in a temperature controlled environment. When working outdoors, keep the unit out of direct sunlight. Avoid operating unit outdoors in extremely hot weather. If the unit reaches temperatures that exceed normal working conditions, the thermal shut-off control will automatically shut the system down.
5. If the Precision Air Inflator malfunctions or is damaged in any way discontinue use and unplug unit from electrical outlet. Contact an authorized Conwin Service Center for details on how to receive service. Never attempt to repair the Precision Air Inflator yourself. Opening the Precision Air Inflator case will automatically void manufacturer warranty. Contact an authorized Conwin Service Center for all repairs.



1 To attach the outlets, firmly press on to each filling port.



2 Plug the power cord into the side of the unit and into an electrical outlet. (A power strip with a surge protector is recommended.) The digital display will appear when unit has power.



3 Plug the foot pedal into the side of the unit.

Setting the Precision Air Inflator



1 Reference the Size Setting Chart (Fig 1.0) to set the Precision Air for the proper balloon size. Set the appropriate number of Seconds by pressing the arrow buttons on the left side of the control panel digital display window.



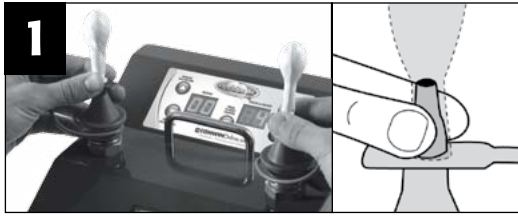
2 Set the appropriate number of Tenths of a Second by pressing the arrow buttons on the right side of the control panel digital display window.

Size Setting Chart

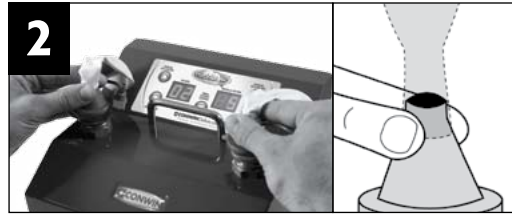
| BALLOON SIZE | APPROX. TIME SETTING |
|--------------|----------------------|
| 5" BALLOON | 0.8 SECONDS |
| 9" BALLOON | 1.5 SECONDS |
| 11" BALLOON | 2.5 SECONDS |
| 16" BALLOON | 8 SECONDS |

The following settings should be used as guidelines for the Precision Air. Please note that size settings will vary based on user preference, balloon color, manufacturer and from unit to unit. To adjust the size of balloon to your individual preference it is necessary to inflate test balloons.

Inflating Balloons with the Precision Air Inflator



Place the Extension Tip over the Latex Outlet when inflating 5" balloons. Slide the neck of the balloon all the way down on the Extension Tip until the neck is touching the base. **To achieve consistent results, do not cover the opening of the Extension Tips with your fingers.**



For 9" balloons and larger, remove the Extension Tip and roll the neck of the balloon over the Latex Outlet. **To achieve consistent results, do not cover the opening of the outlet with your fingers.**



Tap the foot pedal to begin the inflation cycle. When the system automatically shuts-off, remove the balloons from the outlets without allowing any of the air to escape, and tie. Wait 3 seconds for the auto exhaust vent to shut off before the next cycle.



Using and Resetting the Counter

- Every time the foot pedal is pressed the cycle count will be displayed on the digital display windows.
- The time setting for the inflation cycle will disappear once the foot pedal has been pressed. To verify or change the time setting for the inflation cycle, press any of the arrow buttons on the control panel once.
- The balloon time setting will be displayed on the digital window. Press the Reset button in the center of the control panel to set the counter back to zero.

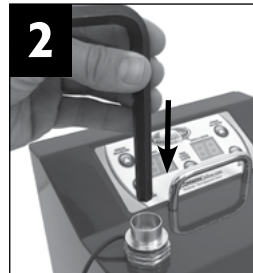
Calibration Instructions

A 3/8 (9mm) allen wrench is required for calibrating the Precision Air.

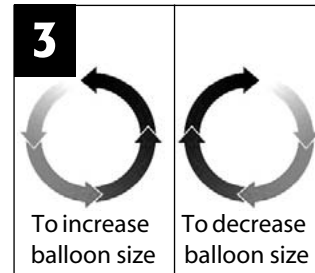
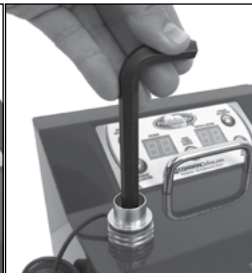
If you detect balloons are not being identically sized from both outlets, follow the instructions below to recalibrate your inflator.



Determine which outlet is not inflating to the correct size and remove the detachable friction fit outlet from the filling port by pulling upward and gently twisting as needed.



Insert the allen wrench into the filling outlet. Gently apply downward pressure and slowly rotate the tool until you hear a "click" sound and feel the tool become fully engaged in the outlet.



To increase the size of the balloon, turn the tool counter clockwise in **quarter turn increments**. To decrease the size of the balloon, turn the tool clockwise in quarter turn increments. **IMPORTANT:** Be careful not to over tighten the setting. **STOP** turning the tool clockwise if you feel resistance on the tool.



Remove the allen wrench and press the detachable friction fit outlet back onto the filling port by pushing downward and gently twisting as needed. Inflate two balloons to compare sizes. Repeat steps 1 through 3 until both balloons are identically sized.

NOTE: Always use 11" balloons when comparing sizes. Once the desired size is reached, all balloon sizes should consistently inflate to the same size when the digital settings are changed. For time settings, refer to the Size Setting Chart on the front of this instruction sheet.